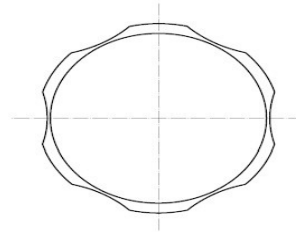
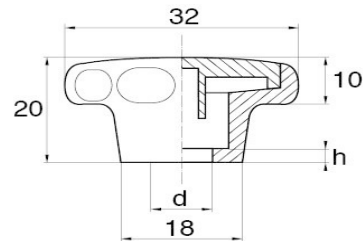




Insert Hex Bolt Or Nut Made Of Steel, Stainless Steel, Brass, Nylon Or Other Material. Housing Designed For Hex Head Bolts Or Nuts :
 ISO 4032, DIN 571, DIN 931, DIN 933, DIN 934, DIN 1587, NFE 24-017
 ISO 4032, DIN 571, DIN 931, DIN 933, DIN 934, DIN 1587, NFE 24-017
 ISO 4017

Usable Bolt Length Once Assembly is Made = Bolt Length Minus "h"



d	A/F	h	Part No
M4	7	2,5	SCO-3204-B
M5	8	2,0	SCO-3205-B
M6	10	3,0	SCO-3206-B
M8	13	2,0	SCO-3208-B