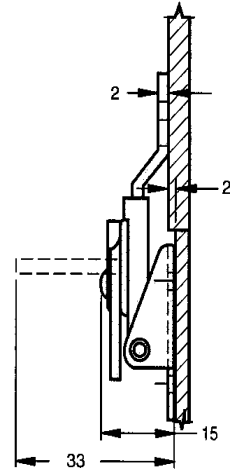
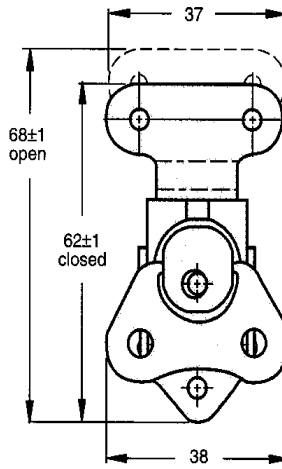
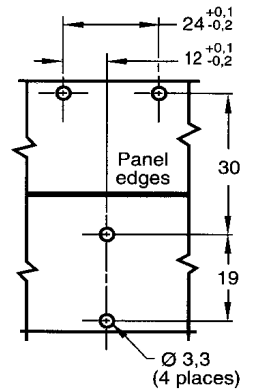


Small Hinge Link Lock[®]



Panel Preparation

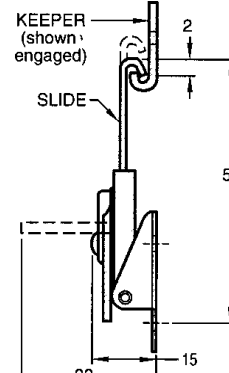
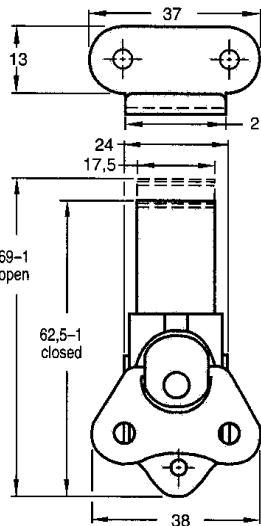


Hinge Lock Style Part Numbers

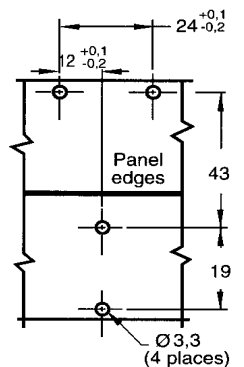
Type	Zinc Plated	Stainless Steel
Latch	K3-1746-07	K3-1746-52

- Lift and turn to latch
- Load carrying capacity up to 2000N
- For application where a tight fit is needed on the hinge side of the door
- Keeper plates is attached to latch
- Zinc plated plus bright chromate dip or stainless steel

Small Link Lock[®] With Long Slide



Panel Preparation



Long Slide Style Part Numbers

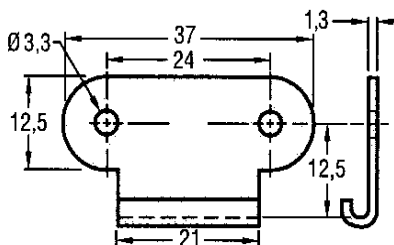
Type	Zinc Plated	Stainless Steel
Latch	K3-2347-07	K3-2347-52
Keeper	K3-0334-07	K3-0334-52

- Lift and turn to latch
- For use in applications when a longer slide is needed for enclosure
- Zinc plated plus bright chromate dip or stainless steel
- Load carrying capacity up to 2000N
- ▷ Keeper plate must be ordered separately

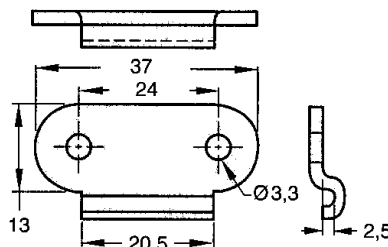
Special Keeper Plates

Elongated Keeper

P/No: K3-0696-07



Right Angle Keeper

 P/No: K3-0100-07 (Steel)
 K3-0100-52 (Stainless Steel)


Concealed Keeper

P/No: K3-1617-07

