

## Small and Medium Adjustable Draw Latch

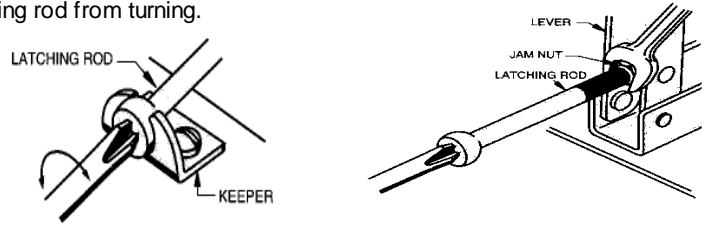


- Ball-end latching rod
- Adjusts to fit your grip range
- With or without vinyl yellow grip
- Zinc plated with bright chromate dip or Type 304 stainless steel

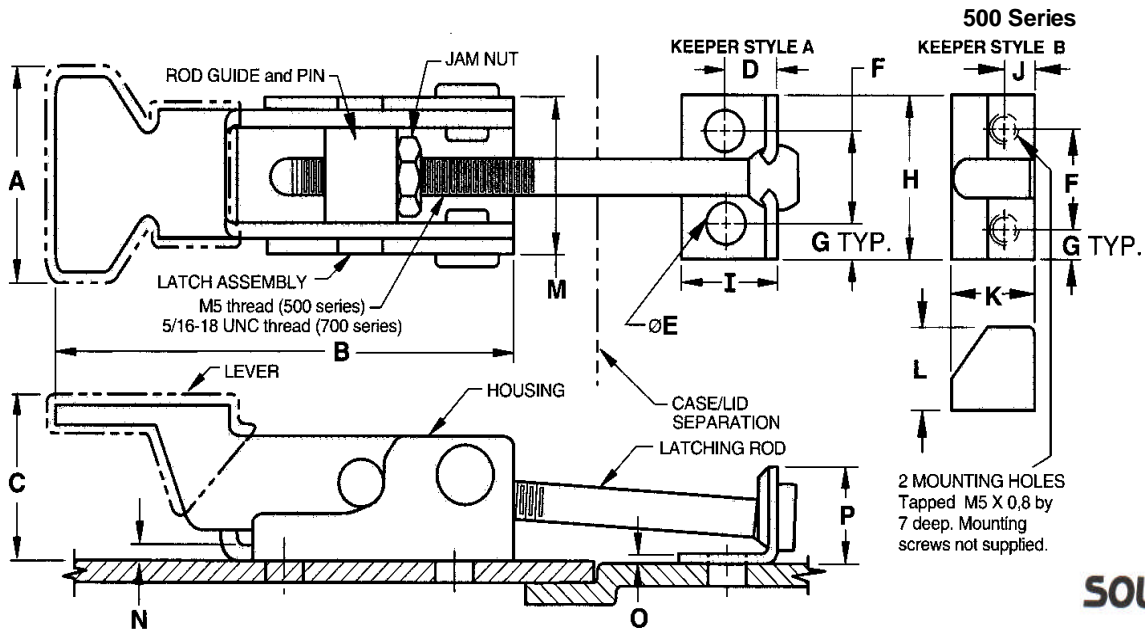
Keeper Style	Part Number	
	Steel, zinc plated	Stainless steel, passivated
Small size <b>WITHOUT</b> yellow vinyl grip		
A	A1-10-501-10	A1-10-501-40
B	A1-10-503-10	-----
Small size <b>WITH</b> yellow vinyl grip		
A	A1-10-501-20	A1-10-501-50
B	A1-10-503-20	-----
Medium size <b>WITHOUT</b> yellow vinyl grip		
A	A1-10-701-10	A1-10-701-40
Medium size <b>WITH</b> yellow vinyl grip		
A	A1-10-701-20	A1-10-701-50

### To Adjust:

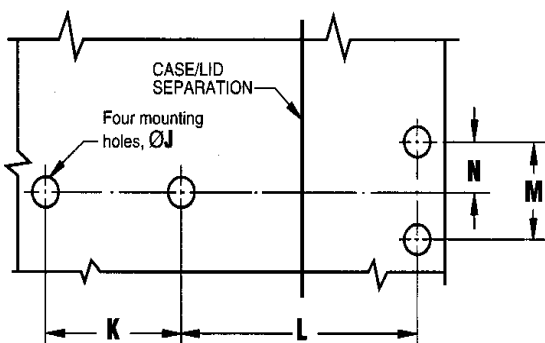
1. With rod and lever in latched position, turn latching rod with a Phillips screwdriver until desired tension is reached.
2. Raised lever and tighten jam nut hard against rod guide using an open and wrench. Use Phillips screwdriver to prevent latching rod from turning.



Size	Dimensions															
	A	B	C	D	E	F	G	H	I	J	K	L	M	N	O	P
Small	27	68	20	8	5.2	13	5	22	14	5	13	12	21	1.5	1.3	11
Medium	40	113	32	11	6.7	19	6	31	19	-	-	-	31	1.9	1.5	19

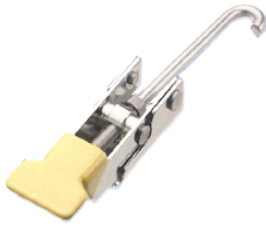


### INSTALLATION



SERIES	INSTALLATION DIMENSIONS					
	Ø J	K	L		M	N
	+0,2 -0,0	+0,1 -0,2	MIN.	MAX.	±0,2	±0,2
<b>Latch with keeper style A</b>						
Small	5,2	25,5	25	44	12,7	6,4
Medium	6,7	44,5	24	57	19	9,5
<b>Latch with keeper style B</b>						
Small	5,2	25,5	29	48	12,7	6,4

## Small and Medium Adjustable Draw Latch



- Hooked latching rod
- Adjusts to fit your grip range
- With or without vinyl yellow grip
- Zinc plated with bright chromate dip or Type 304 stainless steel

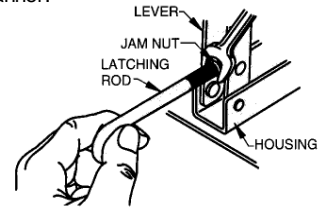
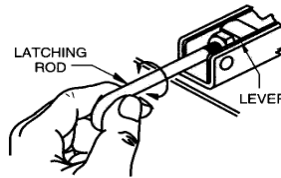
### Part Number

Steel, zinc Plated	Stainless Steel, passivated
Small size without yellow vinyl grip	
<b>A1-11-502-10</b>	<b>A1-11-502-40</b>
Small size with yellow vinyl grip	
<b>A1-11-502-20</b>	<b>A1-11-502-50</b>
Medium size without yellow vinyl grip	
-----	<b>A1-11-702-40</b>
Medium size with yellow vinyl grip	
<b>A1-11-702-20</b>	<b>A1-11-702-50</b>

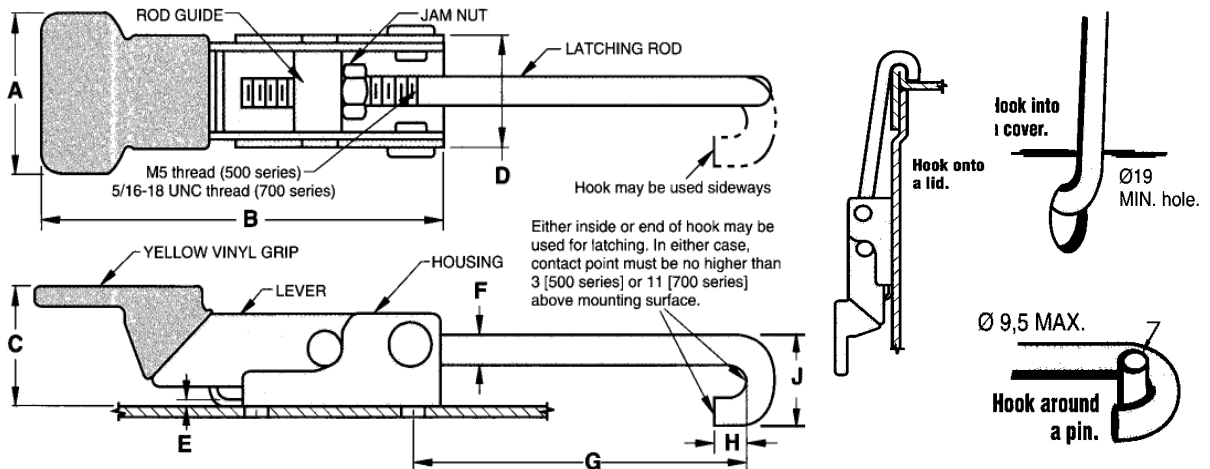
### To Adjust:

1. With lever in latched position, turn latching rod until desired tension is reached.

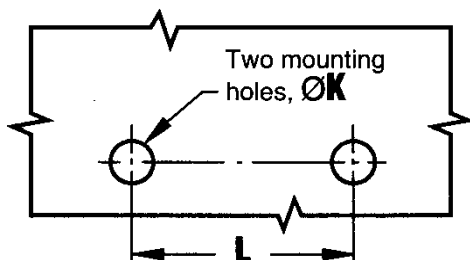
2. Raise lever. While holding latching rod to prevent rotation, tighten jam nut hard against rod guide using an open end spanner.



	Dimensions									
	A	B	C	D	E	F	G Min	G Max	H	J
Small	27	68	20	21	1.6	4.4	39	59	6	17
Medium	40	113	32	31	1.9	7	79	113	9	25



### INSTALLATION



### Installation Dimensions

	Ø K ± 0.1	Ø L ± 0.2
Small Size		
	5.3	25.5
Medium Size		
	6.5	44.5