

Adjustable Compression Latch, Small Size

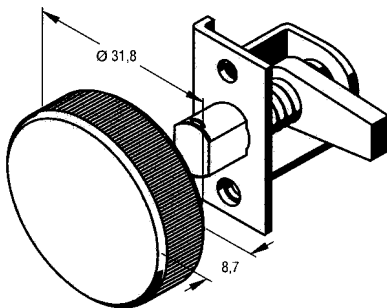


- Simple installation
- An extra turn adjusts the amount of compression applied
- Three hole mount
- Steel construction
- Stainless steel spring
- Clockwise (Type A) or counterclockwise (Type B) rotation to latch
- Multiple grip ranges (see pawl style A,B & C)
- Zinc plated with chromate plus sealer

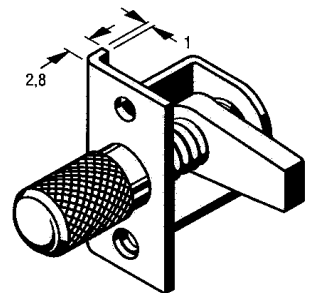
▷ To purchase Tool for toolhead® Recess Style order P/N:29-90-214-0

Head Styles

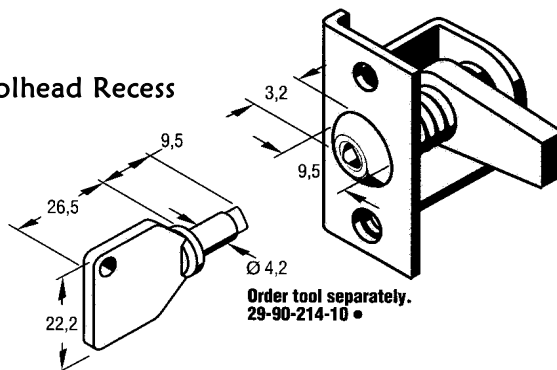
Low-profile black knob



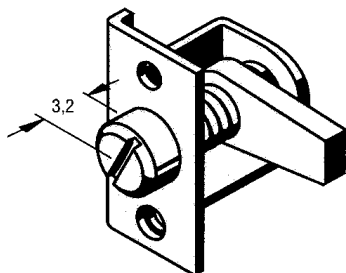
Knurled head



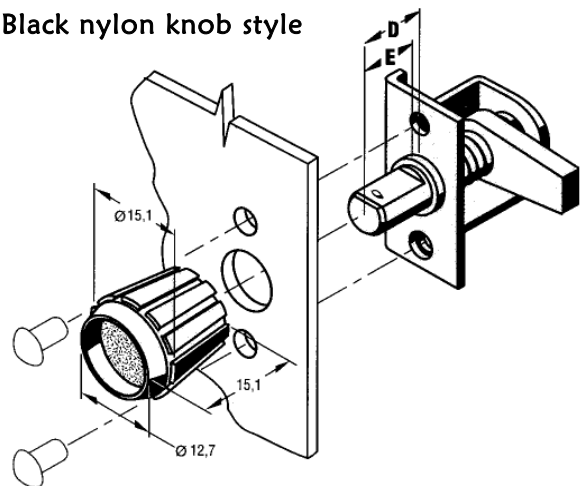
Toolhead Recess



Slotted head

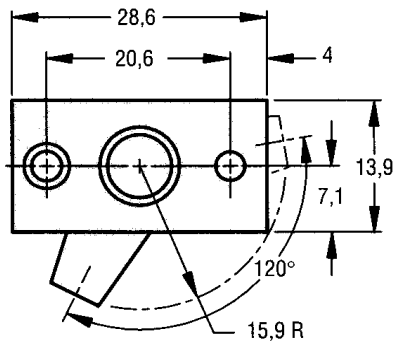


Black nylon knob style

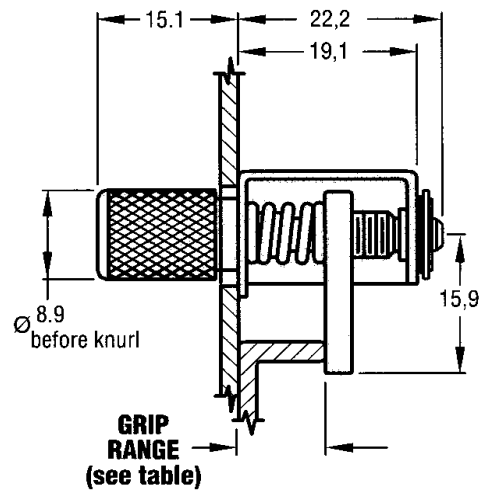
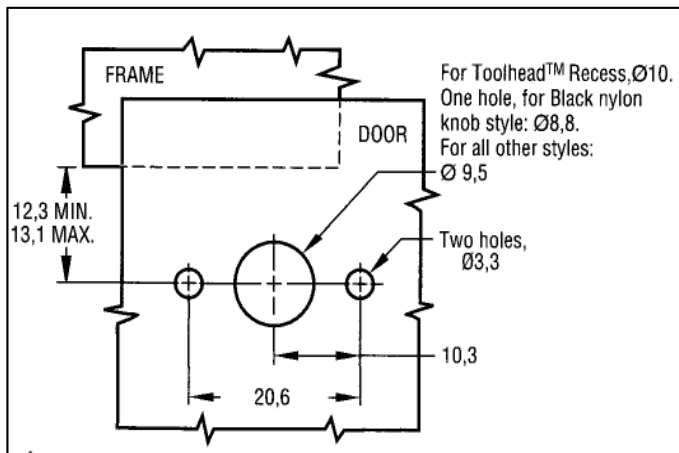


southco®

Adjustable Compression Latch, Small Size (cont.)

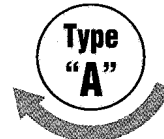


Panel Preparation

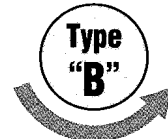


Pawl style and position

(pre-assembled) determines grip range (see table)



Turn clockwise to latch.



Turn anticlockwise to latch.

STYLE	Door Thickness	Grip Range		Part Number			D	E
				With knob supplied		Pawl Position		
		Min	Max	Type "A"	Type "B"			
Black nylon knob	0.8	3.2	7.1	43-99-124-11	43-99-144-11	A	10.7	9.5
	to	6.4	13.5	43-99-124-12	43-99-144-12	B		
	4.3	12.7	19.5	43-99-124-13	43-99-144-13	C		
	4.3	3.2	7.1	43-99-199-11	43-99-230-11	A	13.9	12.7
	to	6.4	13.5	43-99-199-12	43-99-230-12	B		
	7.5	12.7	19.5	43-99-199-13	43-99-230-13	C		
Low profile knob	0.8	3.2	7.1	43-1-28-0	-----	A	-----	-----
	to	6.4	13.5	43-1-29-0	-----	B		
	3.2	12.7	19.8	43-1-30-0	-----	C		
Knurled head	-----	3.2	7.1	43-1-1-0	43-10-1-0	A	-----	-----
	-----	6.4	13.5	43-1-2-0	43-10-2-0	B		
	-----	12.7	19.8	43-1-3-0	43-10-3-0	C		
Slotted Knurled head	-----	3.2	7.1	43-1-4-0	43-10-4-0	A	-----	-----
	-----	6.4	13.5	43-1-5-0	43-10-5-0	B		
	-----	12.7	19.8	43-1-6-0	43-10-6-0	C		
Slotted flush head	-----	3.2	7.1	43-1-13-0	43-10-13-0	A	-----	-----
	-----	6.4	13.5	43-1-14-0	43-10-14-0	B		
	-----	12.7	19.8	43-1-15-0	43-10-15-0	C		
Toolhead® Recess	-----	3.2	7.1	43-T-1	-----	A	-----	-----
	-----	6.4	13.5	43-T-2	-----	B		
	-----	12.7	19.8	43-T-3	-----	C		