

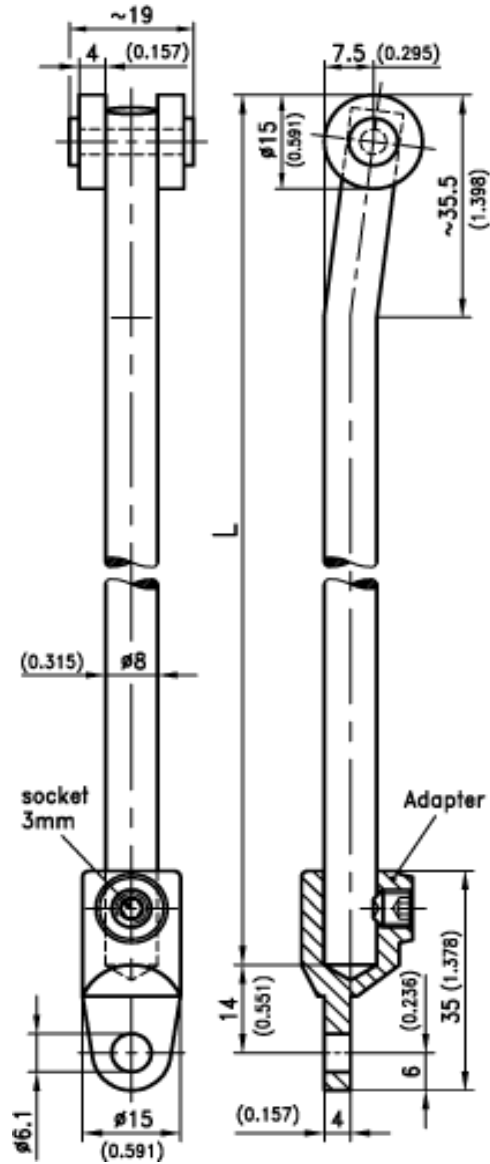
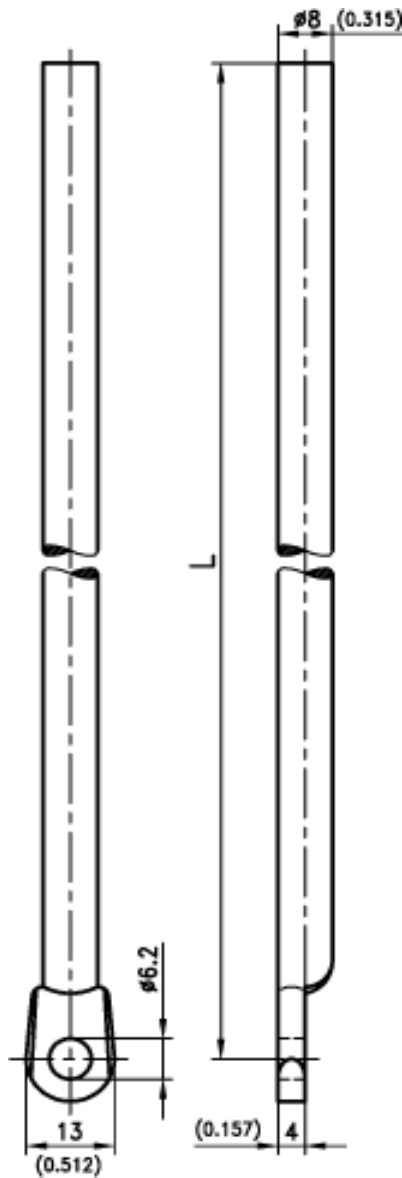


Rod Rods in different versions, standard length.

- **Attention: Dimension L up to top of roller**

Material:-

- Round Rods: steel, zinc plate
- Rollers: PA, Black
- Adapter: zinc die, zinc plated
- Rivet: steel, zinc plated



Round Rods with EYE

L in mm	Part No.
400	201-0102
500	201-0103
600	201-0104
700	201-0105
800	201-0106
900	201-0107
1000	201-0108
1100	201-0109
1200	201-0110

Round Rods with ROLLER

L in mm	Part No.
400	201-9001
500	201-9020-0500
600	201-9002
700	201-9020-0700
800	201-9003
900	201-9020-0900
1000	201-9004
1100	201-9020-1100
1200	201-9005

Adapter 200-9601