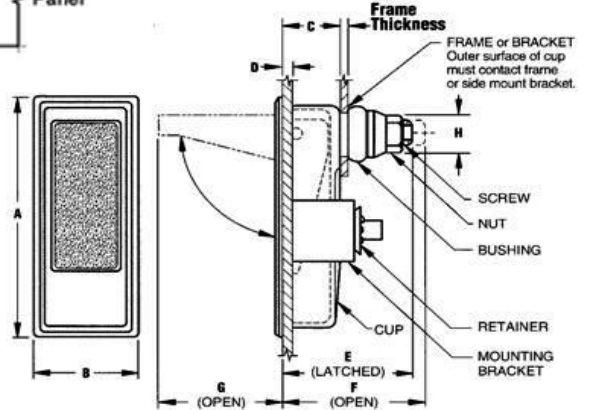
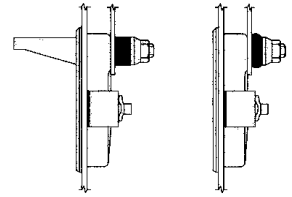
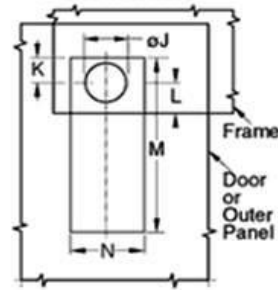


Flush Style Swell Latch, Small and Large



- Accommodates misalignment between door and frame
- Latch in any frame thickness, blind application, glass, plastic or metal
- Resists vibration
- Rubber bushing expands when latched
- Finished with mounting bracket, retaining ring and nut
- Cup, handle and nut are black nylon
- SBR rubber bushing
- ▶ To order optional side mount bracket for

Installation



southco®

part no:19-83-10 order part #19-0-15666-11
part no:19-93-10 order part #19-0-15666-11

(see below)

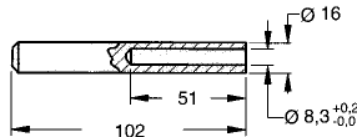
- ▶ For set Tool order part #17-10019-11 (see below)

Part No.	Thread Size	A	B	C	D	E	F	G	H
19-83-10 Small	8-32 UNC	44	19	9.5	3.2	21	23	21	6
19-93-10 Large	12-24 UNC	61	24	13.3	48	30	33	28	8

Set Tool

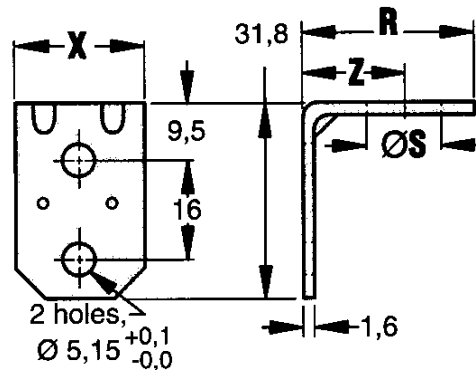
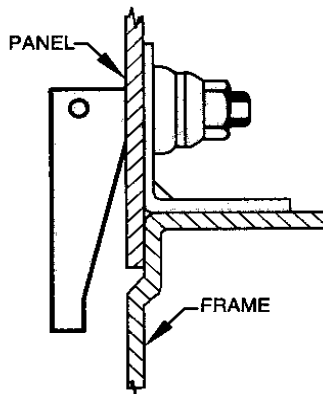
P/No: 17-10019-11

- For use with flush style swell latch
- zinc plated



southco®

Side Mount Bracket, Small and Large



southco®

P/No: 19-0-15666-11 Small
P/No: 19-0-15665-11 Large

- Can be use with small and large size handle style or flush style swell latch

Part Number	Ø S	For use with P/N's
19-0-15666-11 small	9.5	19-81-10 19-83-10
19-0-15665-11 Large	13.5	19-91-10 19-93-10