



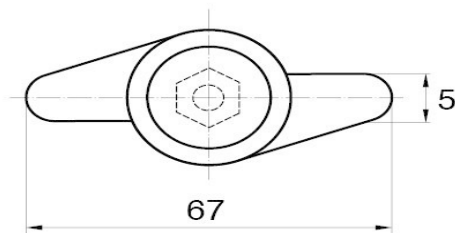
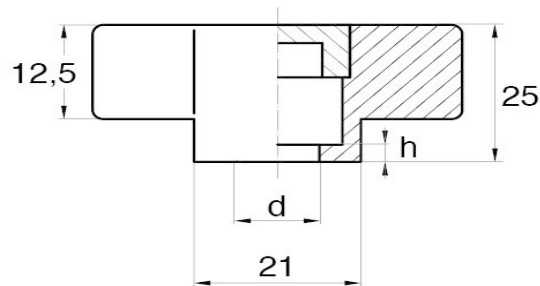
Insert Hex Bolt Or Nut Made Of Steel, Stainless Steel, Brass, Nylon Or Other Material. Housing Designed For Hex Head Bolts Or Nuts :

ISO 4032, DIN 571, DIN 931, DIN 933, DIN 934, DIN 1587, NFE 24-017

ISO 4032, DIN 571, DIN 931, DIN 933, DIN 934, DIN 1587, NFE 24-017

ISO 4017

Usable Bolt Length Once Assembly is Made = Bolt Length Minus "h"



d	A/F	h	Part No.
M5	8	5,0	SCO-86-25-20-M5
M6	10	5,0	SCO-86-25-20-M6
M8	13	5,0	SCO-86-25-20-M8
M10	16	5,0	SCO-86-25-20-M10